

High-Quality Es-Link Analog Current Transmission

The N-05XD also comes fully equipped with Esoteric's original Es-Link Analog transmission output. This advanced current transmission method takes advantage of the HCLD buffer circuit's high performance to deliver powerful, high-speed current supply capability that makes it possible to transmit the audio signal purely, powerfully, and completely unaffected by signal path impedance. This ideal analog audio transmission method maximizes the potential of the system when connected to compatible devices.

Fully Balanced Dual Mono Headphone Amplifier

Enjoy the uniquely blissful musical listening experience of high-end audio in your own personal space by using the N-05XD in combination with your favorite pair of headphones. The N-05XD is equipped with Esoteric's first full-scale fully balanced dual mono headphone amplifier, which responds to new styles of listening with outstanding playback quality that combines Esoteric's advanced preamplifier design technology with a collective wisdom accumulated over years of high-end audio design that always strives for the pinnacle of sound quality.

The amplifier's advanced circuitry features a fully balanced, dual-mono design that closely approximates that of Esoteric's renowned Linestage preamplifiers. It is also equipped with two separate outputs: a balanced 4-pin XLR output jack and an unbalanced 6.3mm stereo audio jack, both conveniently located on the N-05XD's elegant front panel. With its fully balanced power output of 1500mW (into a 32Ω load), this superlative headphone amplifier powerfully drives high impedance headphones with plenty of headroom to spare. For unbalanced output, the ground potential is actively driven to 0V so that any fluctuations of ground (earth) potential in each of the left and right channels do not affect the other, thus realizing eminently clear channel separation, uncompromising high performance, and superb musical expressiveness with both balanced and unbalanced connections.

The Ultimate Versatility

The N-05XD is also a highly versatile high-end component that has been meticulously finished without any compromise, providing top-tier audio performance, no matter the function the user selects to use. When switched to fixed line level output, the N-05XD can be connected to an external preamp for operation as a standalone digital source or DAC. Likewise, its Network function can be completely turned OFF when not use. The N-05XD also comes equipped with AV Pass through output that allows it to be used as a front channel preamp in a surround sound AV speaker system.

Digital Disc Transport and Es-Link Connectivity

The N-05XD is fully compatible with Esoteric's own original Es-Link* wideband digital transmission standard, which allows it to be connected to Esoteric's high-end Super Audio CD player and transport.

* Es-Link is Esoteric's original wideband digital interface. The N-05XD provides support for this interface with a single XLR cable connection.

Bluetooth® Receiver

Such high-quality sound codecs as LDAC, LHDC, aptX HD, aptX, and AAC are all fully supported, while smartphone music files can be easily played with astounding sound quality.

External Clock Sync

Even higher sound quality can be achieved by combining the N-05XD with an external master clock generator by way of its high-accuracy 10MHz master clock input.

Rugged Yet Supple Chassis Construction Helps Control Vibration

The N-05XD's semi-floating top panel accentuates the sensation of the sound output's free, unencumbered feeling, while its bottom chassis features high-precision laser-cut slits on its power supply transformer mounts to control vibration. Esoteric's own exclusive pinpoint feet (Patent No. 4075477, No. 3778108) also effectively release any vibration to the exterior of the unit.

Remote Control Features Easy-Operation Buttons on Both Sides

The N-05XD remote control's ergonomic aluminum body fits naturally in the hand, with buttons located on both sides of the unit for the easiest and most intuitive operation from the comfort of your listening position. In addition to offering straightforward control of preamplifier and network playback, this remote control can also be used to operate the Esoteric Super Audio CD player and transport.



— Specifications —

Inputs and Outputs	
Digital Inputs	XLR x 1, COAX x 2, OPT x 2, USB x 1, Ethernet x 1, USB Drive x 2
Analog Inputs	XLR, RCA x 1 pair each
Analog Outputs	XLR/ESL-A, ESL-A Pre-out, RCA x 1 pair each
Bluetooth®	Version 4.0
Headphone Out	4-pin XLR, 1/4" Stereo Phone x 1 each
Clock Sync In	BNC x 1 (10MHz)
External Control I/O	RS-232C, Trigger In, Trigger Out

Audio Performance	
Frequency Response	5Hz to 75kHz (±3dB)
S/N ratio	110dB
THD	0.0003% (1kHz)
General	
Power Supply	120V AC, 60Hz (Model for US/Canada) 220-240V AC, 50Hz (Model for Europe)
Power Consumption	38W
Overall Dimensions (W x H x D, incl. protrusions)	445 x 131 x 377mm 17-5/8" x 5-1/4" x 14-7/8"
Weight	13.8kg / 30-1/2 lb.

Design and specifications subject to change without notice. ©2021 ESOTERIC COMPANY. All Rights Reserved. All text, images, graphics and other materials on this brochure are subject to the copyright and other intellectual property rights of ESOTERIC COMPANY. These materials shall not directly or indirectly be published, reproduced, modified or distributed in any medium. ESOTERIC is a trademark of TEAC Corporation, registered in the U.S. and other countries. Grandioso is a trademark of TEAC Corporation. All other brand or product names are trademarks or registered trademarks of their respective holders.



Reproducing the full sound quality of the original masters.

The N-05XD represents a new frontier in network DAC/preamps.



As Esoteric's first-ever network DAC/preamp, the N-05XD was specifically designed to deliver superior sound quality from the smallest system configurations combining your favorite power amplifier, speakers, and headphones. Integrating fully balanced circuitry directly derived from Esoteric's flagship series, the N-05XD's network engine is equipped with a pure, dedicated linear power supply and an in-house designed discrete DAC that ensures that its preamplifier and headphone amplifier are capable of clearly reproducing the full sound of a recording's original master.

A seamless integration of the most Esoteric-like essences, the N-05XD has been thoroughly refined under the guiding principles of ultimate sound quality. Just a touch of its volume knob clearly reveals this quality in its most exquisite form, and promises the fullest and most satisfying enjoyment of Esoteric's pure signature sound. No longer must superior sound quality be sacrificed in the pursuit of a simplified high-end audio system.

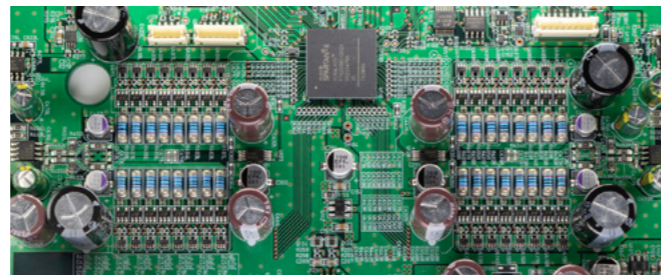
Master Sound Discrete DAC

Faithful Reproduction of the Liveliness and Energy of Music

Esoteric's primary goal in the creation of the N-05XD Network DAC/Preamp was to assemble a careful selection of rigorously tested discrete components into a complete circuit that could perfectly reproduce all the dynamics and energy of recorded music, something simply unattainable using ordinary integrated chips. Esoteric's top engineering teams put their pride on the line to design and produce a quality of sound that can only be experienced by way of our Master Sound Discrete DAC.

Luxurious Materials and Powerful Current Output Capacity

The N-05XD's Master Sound Discrete DAC is the most revolutionary two-channel stereo DAC circuit in Esoteric history, and is based on the original circuit developed for the Grandioso D1X Monoblock D/A Converter. As an extension of the D1X's design philosophy, an abundance of luxurious materials have been invested in the construction of N-05XD's Master Sound Discrete DAC, including 16 separate elements for each channel. Each of these 16 elements, including such key components as the clock driver, logic circuitry, capacitors and resistors, are kept fully independent in order to ensure the purest sound output with virtually no loss of musical energy.



Advanced Digital Processing Capability

The N-05XD is also equipped with Esoteric's exclusive Delta-Sigma ($\Delta\Sigma$) modulator, which supports 64-bit/512Fs audio frequency sampling. To perform D/A conversion on par with its excellent DSD and PCM characteristics, separate FPGA* digital processing algorithms were developed for each step in the conversion process. This enables the N-05XD to extract the optimum sound quality from all compatible digital sources.

* FPGA: Field-Programmable Gate Array

Network Engine with Dedicated Linear Power Supply

As a source component, the N-05XD is equipped with a dedicated high-end network audio engine that supports DSD 22.5MHz playback. The key component in this design is its dedicated linear power supply. With a component configuration equivalent in scale to that of Esoteric's top-of-the-line N-01XD, the N-05XD's large toroidal transformers, high-capacity filter capacitors, Schottky barrier diodes, and high-end super capacitors — which feature a whopping 2,333,333 μ F in total capacity — and forgoing the use of any noisy switching elements, the N-05XD realizes a singularly impressive sound brimming with an analog-like sense of reality.

Compatible with a Wide Selection of Audio Codecs and Streaming Services

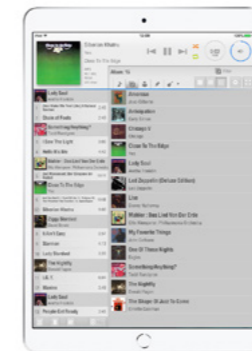
Preparations are currently underway to partner with various streaming service providers while providing full compatibility with an extensive range of audio codecs.



* Not every service is available in every country.

Esoteric Sound Stream

Esoteric Sound Stream is a streaming and network playback control app designed for use with both iOS (iPhones & iPads) and Android. Even inexperienced neophytes can operate this app with fully intuitive and stress-free ease. Additionally, Esoteric Sound Stream has been designed with a degree of refinement that smartly meets the high demands of more advanced users. Native support for such streaming services as Tidal and Qobuz ensures that anyone can easily search for and add songs to playlists from related streaming services while playing music files. Furthermore, songs can be seamlessly selected as if one's own personal music library has been dramatically expanded.



Album artwork courtesy of Onkyo Music © / Warner Music Japan, Japan's largest high-resolution audio distribution site. <https://www.e-onkyo.com/music/>

The Heart of the System:

A Fully Balanced Dual Mono Preamplifier

At the core of any audio system, the preamplifier circuitry plays the central determining factor in how sound is perceived. The N-05XD inherits the Grandioso line's high fidelity and superb musical expression, a compendium of both Esoteric's long-held philosophy and advanced technology, while further inheriting its esteemed pedigree. With its long-established fully balanced dual mono configuration, the preamplifier's dynamic yet delicate sound transcends the boundaries of playback quality, and even goes so far as to delineate the sensibilities of both the performers and the sound engineer.

Esoteric-QVCS Attenuator System

Achieves Both Excellent Operability and Sound Quality

Installed in the N-05XD's preamplifier section, the Esoteric-QVCS* Attenuator system features a total of four collectively operated attenuator circuits that independently and electronically control the left and right audio channels and their positive and negative phases. This system helps maintain superb audio clarity, excellent channel separation and highly accurate phase characteristics. Additionally, the vastly shorter audio signal path helps minimize sound quality deterioration at both low and high volumes and allow the complete, unadulterated expression of musical passion.

* QVCS = Quad Volume Control System

High-Precision Ball Bearing Volume Control Knob

Providing ultra-smooth analog operating feel, the N-05XD's volume control utilizes the same ball bearing support mechanism featured in Esoteric's premier Grandioso line. The volume knob itself is also precision-machined from solid aluminum.



Unique Esoteric-HCLD* Output Buffer Circuitry

The N-05XD's Esoteric-HCLD output buffer circuit was designed in pursuit of the ultimate in current transmission capacity and speed, both of which are critically important factors in achieving the ultimate in analog output circuitry. The buffer's high-speed element features a slew rate—or response speed—of 2,000V/ μ s, allowing it to reproduce with breathtaking clarity the full dynamism of the music being played.

*HCLD: High Current Line Driver

